



welcome to Eagle Eye digital video

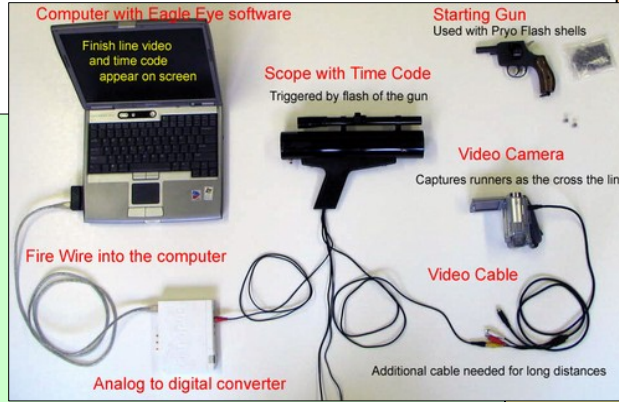
Timing Cheat Sheet

Setting Up Your Timing System

1. Turn on video camera and center on finish line. Elevate camera.
2. Turn on computer and open Eagle Eye software.
3. Plug one end of the camera's AV adaptor cord into the camera and the other end into the video cable. Use a barrel connector if needed.
4. Plug other end of video cable (from the camera) into the female end of the Pyro-Flash cable.
5. Plug the male end of Pyro-Flash cable into the 'Video In' on the converter.
6. Turn on the converter - and if using the ADVC 110, select 'Analog In'.
7. Plug the fire wire cable from the converter into the computers video card.
8. A pop-up window will show that a digital device has been detected on your computer. Select Eagle Eye from the list.
9. Select Live Video within the software to confirm you have a live picture. If this option is not given, click the TV icon on the bottom toolbar once the software is opened. You are now ready to begin timing your track meet. Move on to Timing Basics below.

* For best performance we recommend using a firewire card (as shown) with the 6pin-6pin firewire cable included with your converter -instead of a built in 4pin 1394 fire wire port available on some computers.

* IMPORTANT: Be sure to shut off your camera's 'sleep mode' if it has one. You want your camera to show a live picture for the duration of the track meet.



Basic Video Functions

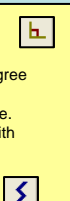
- Show Live Video ----- LEFT CLICK the TV icon on the bottom toolbar.
- Access Directory -- Select FILE-OPEN on top toolbar or CLICK FOLDER.
- Play opened Video ---PRESS SPACE BAR to begin playing. Press again to stop.
- Play in Slow Motion -----Use ARROW KEYS or ROLLER MOUSE.
- Use Drawing Tools – LEFT CLICK ICON to activate. Place cursor, press & hold.
- Save Race --- Press the ENTER KEY to bring up RACE PROPERTIES BOX.
- Bookmark video frame – LEFT CLICK BLUE FLAG on bottom toolbar.
- Read a Race Later -----Press ENTER, save as RACE TO BE READ
- Restore Settings -----Select TOOLS-OPTIONS on top toolbar
- Customize Race Properties ----Select, TOOLS-CUSTOMIZE on top toolbar.
- Change video location ---Select TOOLS-OPTIONS-CAPTURE-CAPTURE FOLDER.
- Activate Toggle Slide ----- LEFT CLICK TOGGLE SLIDE icon on top toolbar.



Helpful Features

- Aligning the camera to the finish line.**
1. With a live picture of the finish line on your screen...
 2. LEFT CLICK an ANGLE icon feature on the left toolbar.
 3. LEFT CLICK and HOLD your mouse to begin to draw a vertical line.
 4. LEFT CLICK mouse to redirect the vertical line to the left and create a 90 degree horizontal line
 5. Alien the vertical line with the finish line and the horizontal line with a lane line.
- * This may involve adjusting the camera at the finish line and communication with computer operator.

Hint: Place cursor over the icon to reveal its name and function.



Enhancing the Finish Line

1. LEFT CLICK the DRAW LINE icon on the left toolbar. Your cursor is now activated.
2. Place cursor on the screen – LEFT CLICK – Release and move line up or down.
3. LEFT CLICK AND HOLD to drag line over the finish line.
4. RIGHT CLICK on line to change finish color, width and other properties.

Add Finish line to the Drawing Library

1. LEFT CLICK the DRAWING LIBRARY icon on the left toolbar. Select SAVE DRAWING.
2. TYPE IN A NAME and click OK.

Using Magnifying Feature

1. LEFT CLICK MAGNIFY icon on the top toolbar.
2. Move mouse to position magnifying lens.
3. RIGHT CLICK MAGNIFY icon to change properties.
4. Use a zoom factor of 2 for best clarity.

Using the Race Directory

1. Select FILE – OPEN from the upper toolbar or select the FOLDER ICON.
2. Select the track meet from the list on the left.
3. Select your event you want to view from the list on the right.

Label poorly marked lanes

1. LEFT CLICK the A icon on the left toolbar.
2. Place cursor on the video and LEFT CLICK again
3. Type the lane number
4. LEFT CLICK the number to drag to the correct location
5. RIGHT CLICK the number to change attributes.

Using the Toggle Slide feature for faster reading.

1. LEFT CLICK the TOGGLE SLIDE icon on top toolbar.
2. Place cursor anywhere on the screen, LEFT CLICK – hold and drag to move video.

Trimming Race Video

1. RIGHT CLICK blue BOOKMARK feature at the desired beginning of the video clip.
2. RIGHT CLICK blue BOOKMARK feature at the desired end of the video clip.
3. LEFT CLICK the TRIM feature (scissors) on the bottom toolbar. * For Advanced Trim Options go to TOOL-ADVANCED TRIM on top toolbar

Change the size of the video screen

On the top toolbar, LEFT CLICK the ZOOM AND PAN icon and select from choices given.

Creating photo results showing each athlete at the line with their time

Printed or Web documents. Great for JV or meet without heat sheets

1. For each finishing athlete, RIGHT CLICK the BLUE FLAG on the bottom toolbar as the torso meets the finish line.
2. LEFT CLICK PRINTER ICON OR EXPLORER icon on the top toolbar.
3. Select RACE SEQUENCES.
4. Select SCALE IMAGE to the number of columns you want in your document. This should correspond to the number of athlete's in the

race. Choose the appropriate number so that the athlete's appear on the same document.

Save on screen image as a picture (JPEG OR BMP format)

1. Go to EDIT-SAVE RACE AS JPEG on the top toolbar.
2. Label and save the picture.



Timing Basics

This following assumes you have installed Eagle Eye on your computer and have connected the hardware as described above.

Opening the Eagle Eye Program

1. Click the EAGLE EYE ICON on your desktop to launch the program.
2. The SELECT A SPORT OR ACTIVITY box will appear.
3. Select the appropriate TIMING METHOD from the drop down list.
 - a. Select: TRACK TIMING: PRYRO-BRIGHT FLASH (if hand writing results)
 - b. Select: Track TIMING: HY-TEK MEET MANAGER (if integrating results with Hy-Tek Meet Manager).

Setting up a Track Meet

4. Select NEW from the SELECT TRACK MEET box.
5. Type in the name of your new track meet.
 - *No need to type in additional information. CLICK OK.
6. Select your new track meet from the list. CLICK OK.
7. Select LIVE VIDEO from the WHERE DO YOU WANT TO START option box.
 - *if this option is not given – go to TOOLS-OPTIONS on the top toolbar and open the GENERAL tab and CHECK the third box – Show Capture / Live Choices / Capture.



Record a Race

8. Confirm you have a live picture. If not, check your set up.
9. LEFT CLICK the RED CAMERA icon on the bottom toolbar.
10. The finish line will appear in the CAPTURE WINDOW.
11. Aim the Pyro-Flash at the Starting gun to trigger time code.
12. Press the GREEN START button to begin recording the race. You only need to record the runners as the finish.
13. To stop recording Press the RED STOP button or the SPACE BAR after the last finisher crosses the line.

Saving the Race

14. THE RACE PROPERTIES box will appear.
15. LABEL THE RACE using the drop down menus.
16. LABEL THE STATUS of the race for the Directory.
17. The race will now appear on the screen.

Reading the Race - Generating Basic Results

18. Press the SPACE BAR to begin playback.
19. Press SPACE BAR again to stop playback.
20. Use your MOUSE, ROLLER WHELL or SCROLL BAR to advance runners in slow motion across the line.
21. RECORD/ WRITE DOWN the time code that appears on the screen as the athlete's torso touches the finish line. Round time to the 1/100th.

HELPFUL HINT: When recording distance events with large gaps between finishers, make reference (on paper) of the time on the screen as athletes pass the finish line. You can then quickly scroll to that portion of video during playback.

Helpful Hint

For faster operation, always use a mouse. When reading a race – left hand on the space bar, right hand on the mouse – index finger on the roller wheel. You can stop full speed playback by moving the roller wheel.

Basic Troubleshooting

Why can't I get a live picture?

- 1) turn on camera and converter. 2) Set converter to Analog-In.
- 3) Be sure fire wire card is firmly seated in computer. Turn on computer and converter before plugging fire wire into computer.

Why is the video play-back is poor?

With video on the screen, press the ENTER key to bring up the RACE PROPERTIES box. Make sure Progressive Scan is off (unchecked) and playback is set to 59.94.

The software no longer gives me the same choices?

On the top toolbar, select TOOLS-OPTIONS. Review settings in the GENERAL and CAPTURE folders.

How do I save the video to a different location?

On the top toolbar go to TOOLS-OPTIONS-CAPTURE-CAPTURE FOLDER and navigate to new destination.

Why have the Drawing Features changed?

RIGHT CLICK LEFT TOOLBAR features.

Why does it automatically record when I click the 'Green' camera icon?

LEFT CLICKING A GREEN CAMERA icon will automatically begin the recording process. RIGHT CLICK the green camera icon to return it to its ORIGINAL RED COLOR and function. LEFT CLICKING a red camera will show a preview window and allow you to press the green button to begin recording (this is preferred).

How can I add events to the drop down lists?

You can customize the RACE PROPERTIES drop down lists by going to the top Eagle Eye menu and select TOOLS-CUSTOMIZE. Review the options in the Golf Terms drop down list to view the item you want to change. When located, replace defaulted terms with your custom terms or numbers. To change EVENT NUMBER – go to 'Club', to change ROUND NUMBER – go to 'Shot', to change HEAT NUMBER – go to 'View.' To test: open a video, press the ENTER key to bring up the RACE PROPERTIES and review the drop down menus. If the new terms have not been accepted, try leaving the first line blank or – try the reverse of this and take out the empty first line if necessary.

Networking Two Computers System Set-Up & Operation



Computer 1: Eagle Eye

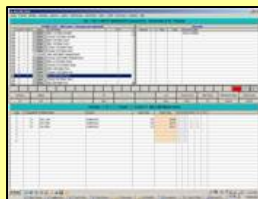
Computer 2: Hy-Tek



Generates Times



Connected with
The Tornado™
USB file transfer device



Manages Results
Creates Heat Sheets

Upon opening the software

Upon Start Up, select Track Timing: Hy-Tek Meet Manager' from the Select Activity menu.

Select Photo Finish Interface from the Set-Up menu on the toolbar. Within:
Hy-Tek 1.2: select FinishLynx File Sharing
Hy-Tek: 2.0: select Eagle Eye File Sharing

Most common set-up for small to medium sized track meets (as shown above)

Two computers are networked together, each with their own designated task. Computer 1 TIMES and READS races with Eagle Eye software while computer 2 MANAGES THE RESULTS with Hy-Tek Meet Manager.

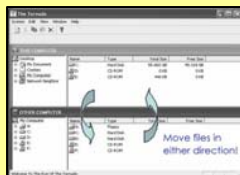
Most common set-up for large track meets and Invitational competitions

Many Eagle Eye operators choose to run a second Eagle Eye program on computer 2. When both computers are running Eagle Eye, the bi-directional ability of TheTornado greatly increases the flexibility and efficiency of the entire process. This set-up allows the operator of computer 2 to immediately drag-n-drop race video to their computer to begin reading the race within Eagle Eye. As a result, the operator of computer 1 can immediately give the Starter the white flag and begin recording the next event.

Note: This configuration requires the simultaneous use of two copies of Eagle Eye software. This can be done with a single purchase however it will require the use of both Activation Codes per your Software License Agreement.

Transferring Files

Once connected to each PC, The Tornado™ automatically displays the entire contents of each PC in a split screen format – enabling either the Eagle Eye or Hy-Tek operator to quickly drag-n-drop the results files from C:\tfmeets folder on the Eagle Eye computer to the C:\tfmeets folder on the Hy-Tek computer. This is done after each race.



Once the results file lands in the C:\tfmeets folder on the Hy-Tek computer, selecting the GET TIMES button within Hy-Tek will auto-populate the results into the appropriate lanes and positions associated with the event.

Reading the Race with Eagle Eye & Sending Results to Hy-Tek feature

NOTE: MUST follow steps 3.b. to use this feature. Select: TRACK TIMING: HY-TEK MEET MANAGER upon software start-up.

PLAY BACK

18. Press the SPACE BAR to begin playback.
19. Press SPACE BAR again to stop playback.
20. Use your MOUSE, ROLLER WHEEL or SCROLL BAR to advance runners in slow motion across the line.

THIS IS WHERE INSTRUCTIONS DEVIATE FROM THE PREVIOUS PAGE and specific to working with Hy-Tek READ THE RACE

21. With the athlete at the line, LEFT CLICK the BLUE FLAG on the bottom toolbar to Bookmark Note box. each athlete.
22. VISUALLY CONFIRM that the time code on the screen matches the time in the pop up box.
23. Press the ENTER KEY and ENTER THE ATHLETES LANE OR POSITION NUMBER.
24. Repeat this process for all runners.

SAVE THE RACE

25. Press the ENTER KEY to bring up the RACE PROPERTIES box and SAVE THE RACE with the drop down menus.
26. Save the race accordingly...
EVENT NUMBER: Select the same EVENT NUMBER that Hy-Tek assigned to this event.
ROUND NUMBER: Select round 1 if this is THE ONLY ROUND OF THIS EVENT.
Select round 2 if this IS THE SECOND OR FINAL ROUND OF THIS EVENT.
(Example: Prelims/ Trials = Rounds 1 and Finals = Round 2.
HEAT NUMBER: Select the appropriate heat.
27. Classify the event as RACE COMPLETE once you have FINISHED READING THE RACE.
Classify the event as RACE TO BE READ (or similar) if you want to find it quickly in the directory at a later time....in case you choose not to read the race immediately or you leave the race unfinished.

EXPORT THE RACE FILE TO HY-TEK MEET MANAGER

The Tornado™ USB file transfer device makes this process very easy...a simple drag-n-drop. Once plugged into both computers USB ports, a split screen showing each computers hard drive will appear. Click through the C drive of each computer and OPEN THE TFMEETS FOLDER on each computer. If you do not visually see the results file land in the tfmeets folder....simply perform a RIGHT CLICK REFRESH on the file.

28. LEFT CLICK the CLOCK icon on the bottom toolbar to SAVE THE RACE. The file will be named correctly. Do not change the file name.
29. THE FIRST TIME DOING THIS: Direct the results TO BE SAVED IN THE TFMEETS FOLDER ON THE C DRIVE.

(C:\tfmeets). The C:\tfmeets folder will then be defaulted for all other races that follow. (Create a folder on your C drive called tfmeets if you don't have one)

THE DUTIES OF THE EAGLE EYE OPERATOR ARE NOW COMPLETE

WITHIN HY-TEK

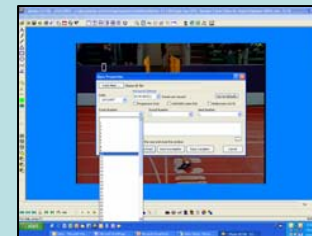
30. The Hy-Tek operator (or the Eagle Eye operator) then drags-n-drops the results file from the Eagle Eye C:\tfmeets folder to the Hy-Tek c:\tfmeets folder. This is done by clicking into the Tornado screen and revealing the split screen showing both computer hard drives. The Hy-Tek operator may need to perform a RIGHT CLICK on the tfmeets folder in the Tornado directory and select REFRESH to reveal the results file on their computer.

31. With the correct event opened in Hy-Tek, click GET TIMES to have the race results auto-populate into the appropriate lanes and positions.

Note: Make sure you have selected the correct heat if there are multiple heats associated with the same event.

Helpful Hints

For faster operation, always use a mouse. When reading a race – left hand on the space bar, right hand on the mouse – index finger on the roller wheel. You can stop full speed playback by moving the roller wheel. Turn on Toggle Slide for less mouse travel.



Basic Troubleshooting

Why does Hy-Tek does not detect Eagle Eye as a results software?

Go to SET-UP on Hy-Tek's top menu and choose PHOTO FINISH INTERFACE and EAGLE EYE INTERFACE if using Hy-Tek version 2.0. If using Hy-Tek version 1.2, select FINISHLYNX FILE SHARING.

Why is the GET TIMES button is not highlighted?

You do not have the HY-TEK PHOTO FINISH INTERFACE installed on your computer. This does not come standard with Meet Manager.

Why to I get an error message in Eagle Eye when trying to save a race – when left clicking the clock?

- 1) You may have assigned a duplicate lane number to an athlete. ...go back and re-check your bookmarks. 2) You may be using an older scope that is having trouble reading the numbers 8 and 3...go back and re-check and manually change time in pop-up window to that of the time code on the screen.

Why does the time code on the screen not match the time in the pop-up window?

- 1) You may have begun recording before the time code was running on the screen. 2) Your Pyro scope is an older model and may need to be reconfigured. See web site for more information or email us at: info@eagleeyedv.com for instructions.

How can I change the time in the pop-up window if there is a problem with my Pyro-Flash scope?

Yes. You can manually type over the time in the pop-up window. The white time code on the screen takes precedent over the time in the window.

How do I test my Pyro Flash scope in my office without using a starting gun?

Your scope can be triggered by a quick flick of the wrist at a ceiling light or computer screen. If this doesn't work use a camera flash.

Why did the results file not land in the tfmeets folder when using The Tornado file sharing?

Perform a right click on the file in the directory and select REFRESH. The missing file will now appear.

When saving a race, the drop down menus do not give me the options I need. Can I customize this list?

This list can be customized. Details are in the Troubleshooting section on reverse side.

Breaking Ties when bookmarking

How do I break ties when bookmarking?

Within Eagle Eye - assign the appropriate hip numbers of the athlete's who have tied (see above picture) -- one on top of the other as shown. Hy-Tek will then assign the same finishing time to both athletes. Use the Hy-Tek's Judge function is you wish to manually break the tie.

