


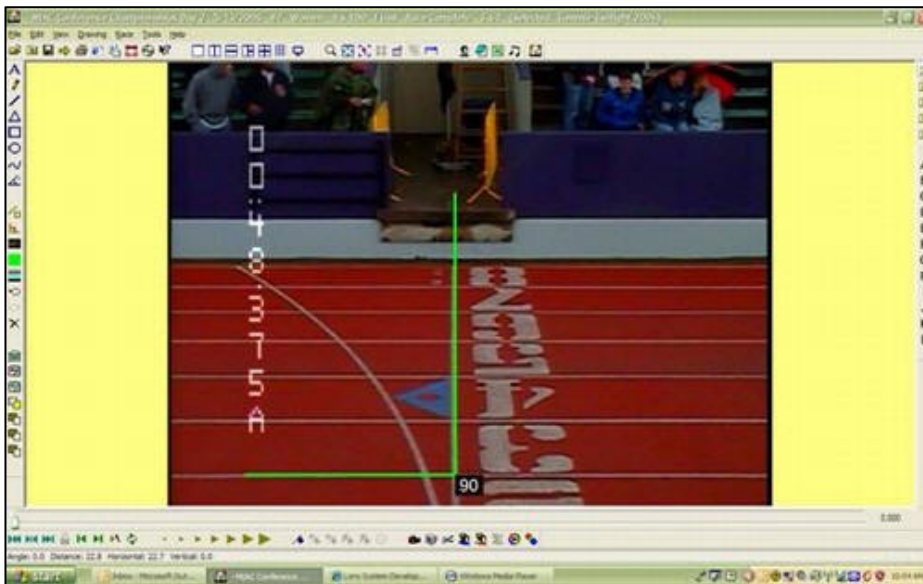
## Software Features

*Eagle Eye*

### Aligning the camera to the finish line

This method provides an accurate method of aligning the video camera to the finish line.

1. **Bring up a live picture** of finish line on the computer screen
2. **Activate the SNAP-ANGLE feature.**  
LEFT CLICK the **SNAP ANGLE** icon feature on the left toolbar.  

3. **Draw a VERTICAL LINE**  
LEFT CLICK and **HOLD** your mouse on the screen and move draw a line.
4. **Create a 90 degree Angle**  
LEFT CLICK the mouse to redirect the vertical line to the left or right and create a 90 degree horizontal line.
5. **Align with the Finish Line**  
Grab the line with your mouse (left click and hold) and align the vertical line with the finish line and the horizontal line with a lane line.



**Tip:** This may involve adjusting the camera at the finish line and communication with the computer operator.