

## Basic Troubleshooting

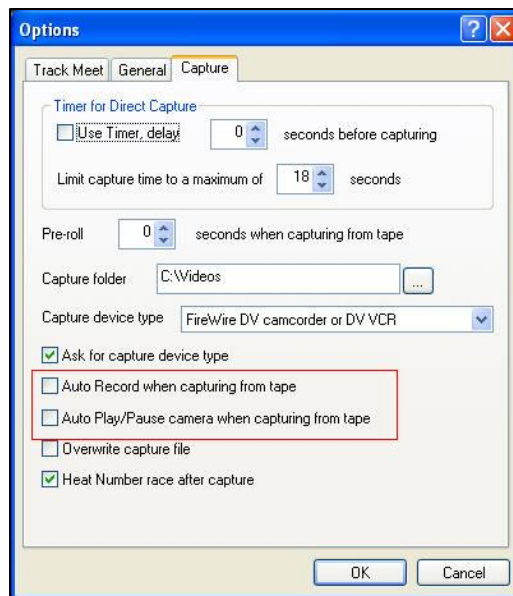
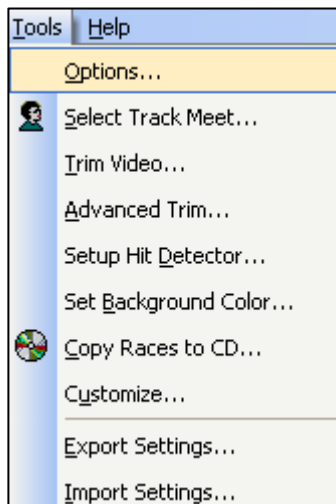
*Eagle Eye*

**Software:** Most software problems occur when the internal software settings or options are unknowingly changed by the user. When this happens, the software may function differently from what the user expects.



### Stop the automatic record function

There are two reasons why Eagle Eye software may begin recording prematurely - or at least earlier than you expect it to or have experienced in the past.

1. Go to **TOOL-OPTIONS** on the top toolbar
2. Select the **Capture tab** and **reset** your checkbox **settings** to match what's shown in the picture.



### Software automatically records when I click the 'Green' camera icon.

1. **LEFT CLICKING** a **GREEN CAMERA** icon will automatically begin the recording process. 
2. **RIGHT CLICK** the **Green camera icon** on the bottom toolbar to return it to its original **RED** color and function. 
3. **LEFT CLICKING** a **RED camera** icon will show a preview window and allow you to press the round **GREEN START** button to begin recording (preferred).