

Eagle Eye & Hy-Tek Integration

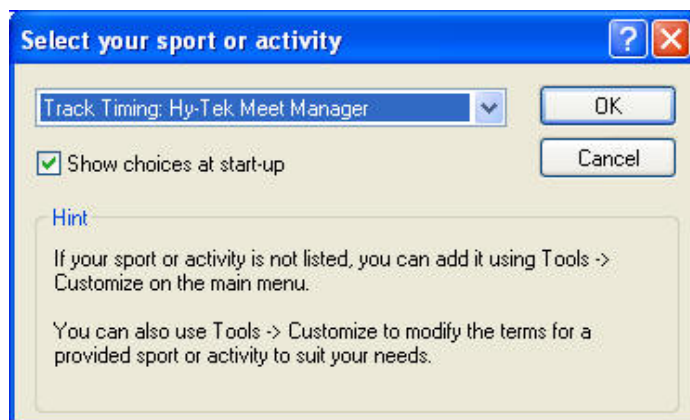
Eagle Eye

Why does Meet Manager not detect Eagle Eye

In order for Eagle Eye and Hy-Tek Meet Manager to share results, you must first select the appropriate settings within each piece of software.

1. Eagle Eye Software

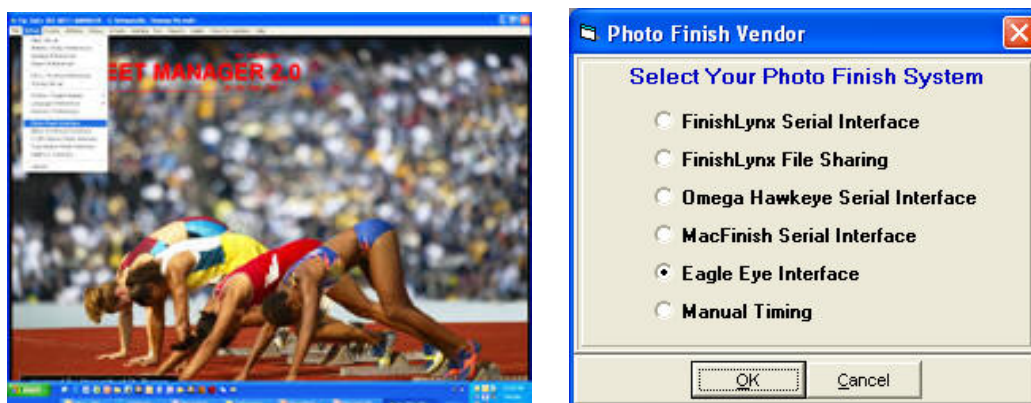
Upon opening Eagle Eye software – from the **SELECT YOUR SPORT OR ACTIVITY** drop down menu, choose **TRACK TIMING: HY-TEK MEET MANAGER** from the list.



2. Hy-Tek Meet Manager Software: Version 2.0

Open Hy-Tek Meet Manager and from the top toolbar, select **SET UP - PHOTO FINISH INTERFACE** and choose **EAGLE EYE INTERFACE** from the listed options.

If this option is not available, follow the listed steps below.



Hy-Tek Meet Manager software: Version 1.2.

If you are using the older 1.2 version of Meet Manager, the process is the same as above, however you will need to select **FINISHLYX FILE SHARING** from the listed options. Note: the process of file sharing is the same.