

## Software Features



### Dual camera recording

This feature allows two cameras to simultaneously record the finish from both sides of the Finish Line. Since dual camera recording takes a large amount of RAM we recommend using two camera's for dash events only, where close finishes are likely and the amount of actual recording time is limited.

Due to a limitation of the way digital video camcorders work with firewire, you will need one firewire card and one converter per camcorder (two converters, two firewire cable/ports). This is a hardware limitation, not an issue with Windows or Eagle Eye software.

It is NOT RECOMMENDED that you use both firewire ports in your single 6-pin firewire card (the card that plugs into the side of your laptop).

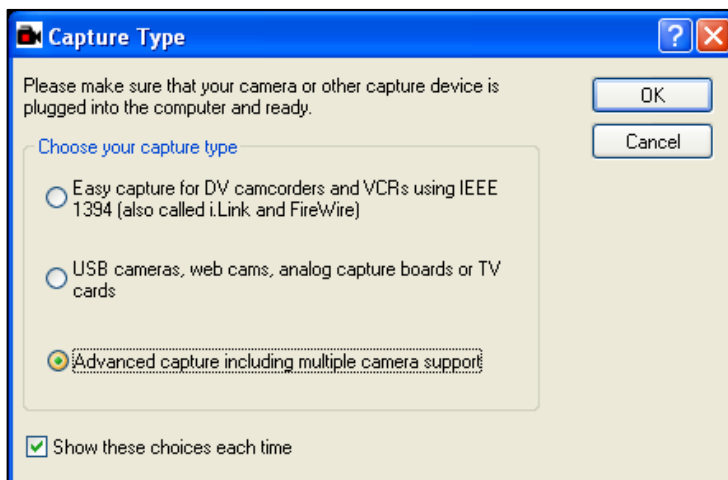
The arrows below show the order of set-up for both cameras. Keep in mind that you must insert the Pryo-Bright Flash into the converter that will connect in your computers 6-pin firewire card and not into the smaller IEEE 1394 built-in port firewire.

Camera 1 → Video Cable → Pyro-Flash → Converter → 6-pin/6-pin firewire cable into firewire card

Camera 2 → Video Cable → Converter → 6-pin/4-pin firewire cable into built in IEEE 1394 port

1. Connect the components of the timing system as listed above. To complete this step, knowledge of the general hardware and software set-up is necessary.

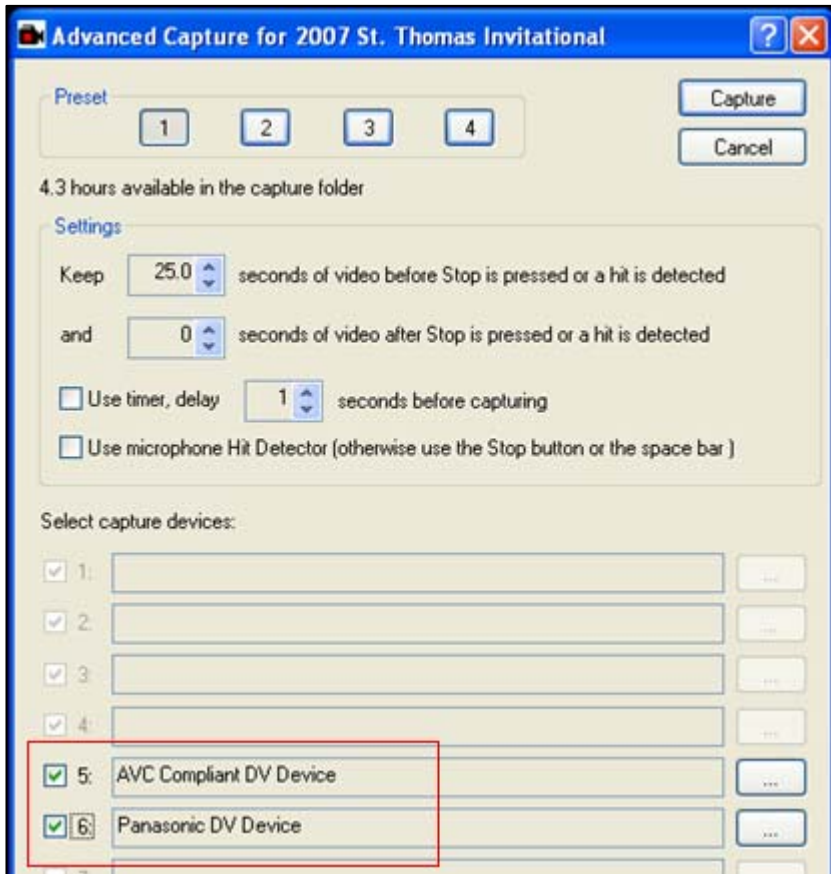
2.



Select the **RED-CAMERA** icon.

Once the Capture Type window appears, Select **ADVANCED CAPTURE** from the list of options.

3.

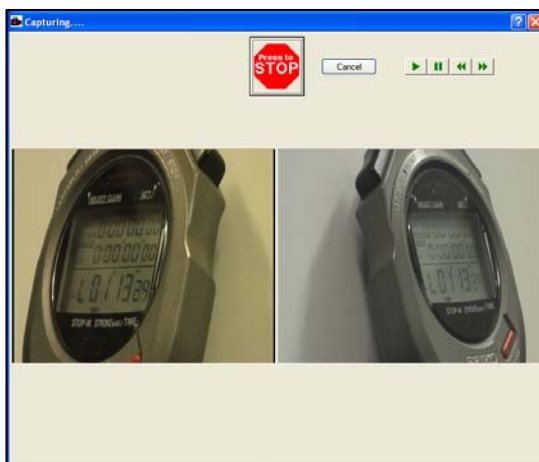


LEFT-CLICK the box next to your **CAPTURE DEVICES** (your cameras) from the list as shown in the red box in this picture.

There is no need to change any of the additional defaulted settings.

**Tip:** If your cameras are not listed, your computer has not detected them due to an incorrect set-up.

4.



### Record

Proceed with the recording process as normal.

When recording in the Advanced Capture mode (two cameras) you will now see a split screen window showing video from each camera.

### Playback

Upon stopping the recording process your video will appear on the screen (as normal) ready to read.

5.



To assure both video clips playback simultaneously, **LOCK** the video's by LEFT-CLICKING the blue paddle lock icon. When the icon turns **RED**, the two videos are now locked and ready to play simultaneously. [time-code will appear on one of your screens...not shown in this image]

