

General Instructions

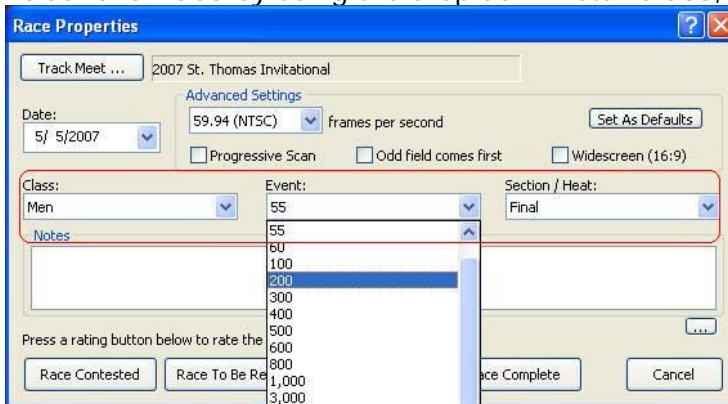
Eagle Eye

Saving a Race

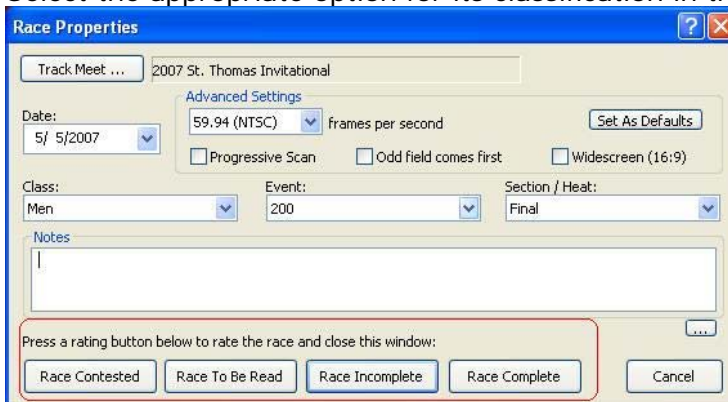
The RACE PROPERTIES box (as shown below) appears immediately after stopping the recording process. It is your choice whether you want to Save the race at this point or wait press the ENTER key to begin Reading the race.

Note: The RACE PROPERTIES box can be re-called at anytime by pressing the ENTER key as long as video is on the computer screen.

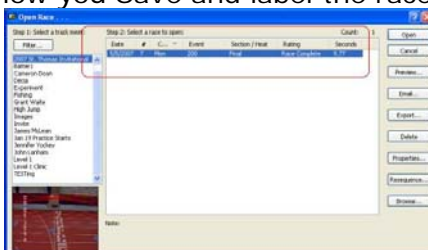
1. **Bring up the RACE PROPERTIES BOX** by pressing the **ENTER** key.
2. **Label the Race** by using the drop down lists: **Class**, **Event** and **Section/Heat**



3. **LABEL THE STATUS of the Race**
Select the appropriate option for its classification in the Directory.



How you Save and label the race video will reflect how it appears in Directory.



Tip: You can always call up the RACE PROPERTIES box by pressing the ENTER key

Tip: Refer to Software Features: [How to add Events to the drop down list](#) to learn how to customize the drop down lists.