

## Eagle Eye & Hy-Tek Integration




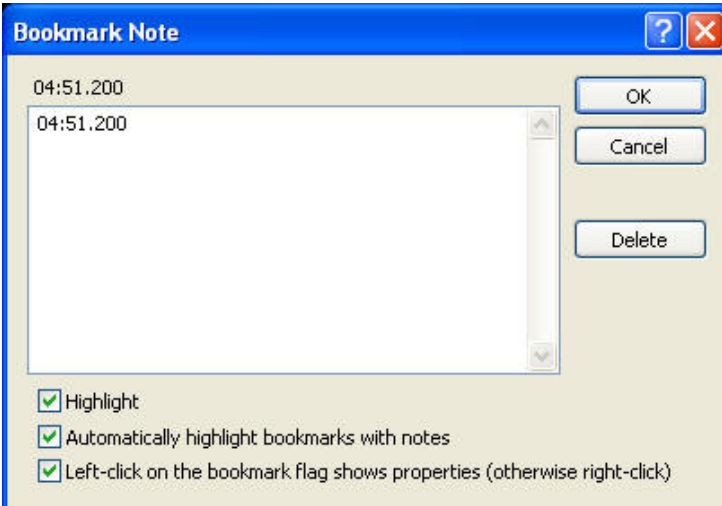
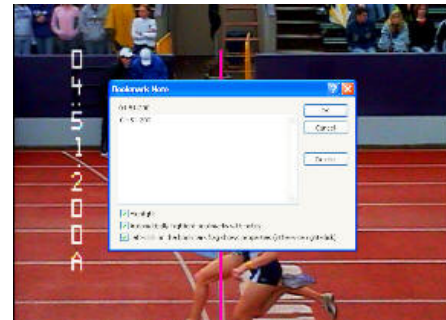
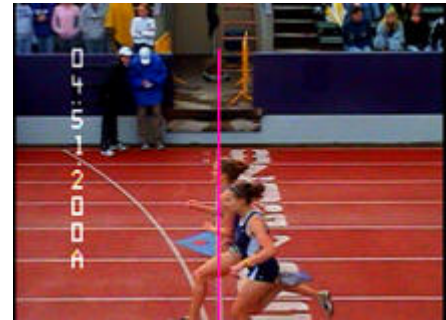
### Reading a Race

Reading a race while integrating Eagle Eye with Hy-Tek Meet Manager deviates from the standard instructions.

The process described below creates the results file (associating the finishing runner with their individual time) in a format that Hy-Tek Meet Manager can read.

#### 1. Determine Times

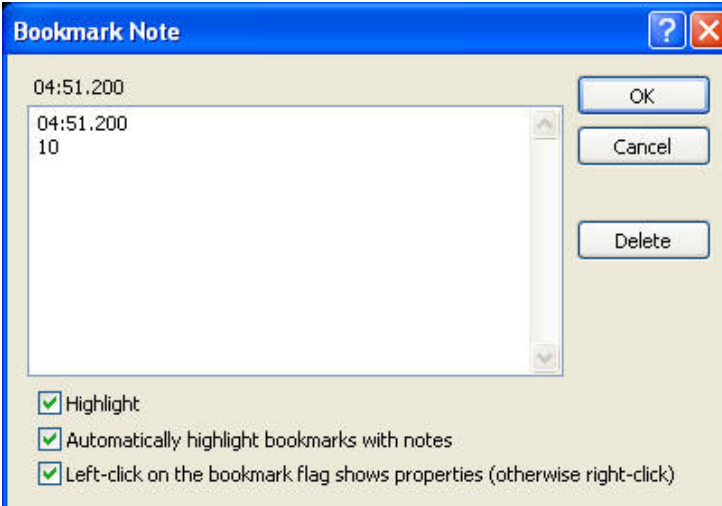
 With the athlete properly aligned at the finish line (as shown on the right) **LEFT CLICK** the **BLUE FLAG** icon located on the bottom toolbar. This will bring up the **Bookmark Note** as shown below.



The screenshot shows the 'Bookmark Note' dialog box. It has a title bar with a question mark and a close button. The main area contains a text box with the time '04:51.200' entered twice. To the right of the text box are three buttons: 'OK', 'Cancel', and 'Delete'. Below the text box are three checked checkboxes: 'Highlight', 'Automatically highlight bookmarks with notes', and 'Left-click on the bookmark flag shows properties (otherwise right-click)'.

Note: It is always a good idea to visually confirm that the time on the screen matches the time in the box.

#### 2. Assign Lane or Position Numbers



The screenshot shows the 'Bookmark Note' dialog box. The text box now contains the time '04:51.200' followed by the number '10' on a new line. The 'OK', 'Cancel', and 'Delete' buttons are still present. The checkboxes at the bottom are the same as in the previous screenshot.

Press the **ENTER** key to tab down below the listed time.

Type the **LANE NUMBER** or **HIP NUMBER** of the finishing athlete.

In this example the athlete crossing the finish line is competitor number 10.

**Note:** Hip numbers are necessary for automatic timing systems.