

Importing Sample Race Video

Eagle Eye

Downloading from the web or importing from your computer

Below are sample video clips that when played in your Trial Version will help you experience the many features of Eagle Eye software.

Note: In order for this process to work, you must first have the Eagle Eye Trial version installed on your computer

1. Place your mouse on **top of one of the images** below.
2. Perform a RIGHT CLICK and select **SAVE TARGET AS**.



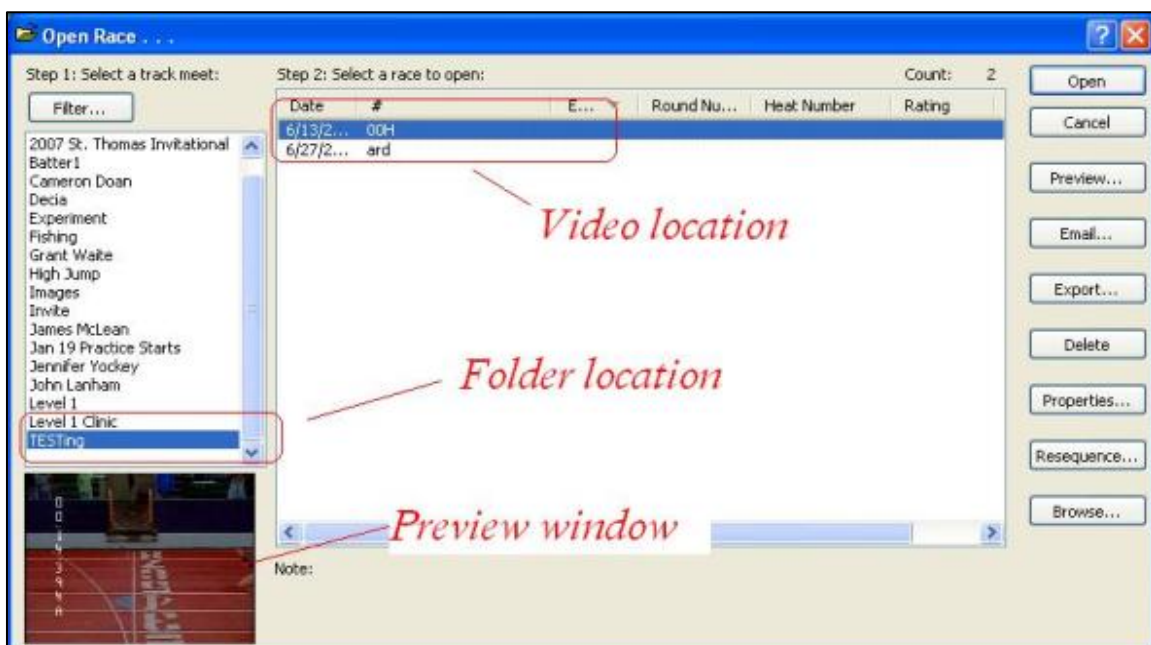
[Women's 100H](#)

[Women's 400m](#)

[Men's 400](#)

[Women's 1500](#)

3. Navigate to you **C drive** and select the **VIDEOS folder**. Note: Eagle automatically creates this file upon installation as its default storage site.
4. **Open Eagle Eye** and on the top toolbar (far left) select **FILE -OPEN** to bring up the following Directory.
5. Your downloaded video is shown in the upper blue bar. **Select OPEN**.



Tip: Refer to the next tutorial if your imported video appears blurry or fuzzy.