

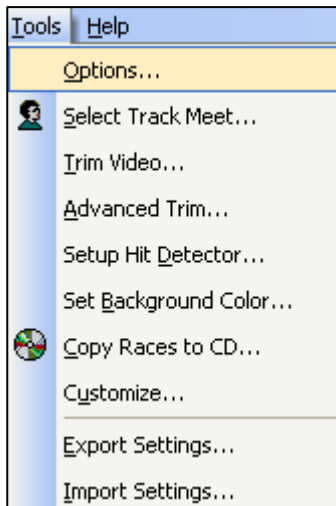
## Basic Troubleshooting



**Software:** Most software problems occur when the internal software settings or options are unknowingly changed by the user. When this happens, the software may function differently from what the user expects.

### How do I restore my software settings if my options have changed?

1. Go to **TOOLS** on the top toolbar and select **OPTIONS** from the list.



2. Open the **GENERAL** and **CAPTURE** tabs and compare your software checkboxes to the defaulted checkboxes to the images below.

