

## Software Features

*Eagle Eye*

### Labeling poorly marked lanes on your screen

This feature is handy when 1) the painted numbers on the track are worn or not visible on the Finish Line 2) the camera is mounted on the inside of the track or 3) you reverse the direction of the dash events - where no marking exist on the finish the new finish line.

#### 1. Select Best Color



Decide what color will show up best on your screen - then LEFT CLICK the **SELECT COLOR icon** on the left toolbar.

#### 2. Activate the DRAW TEXT feature

LEFT CLICK the **A icon** on the left toolbar to activate the DRAW TEXT feature.

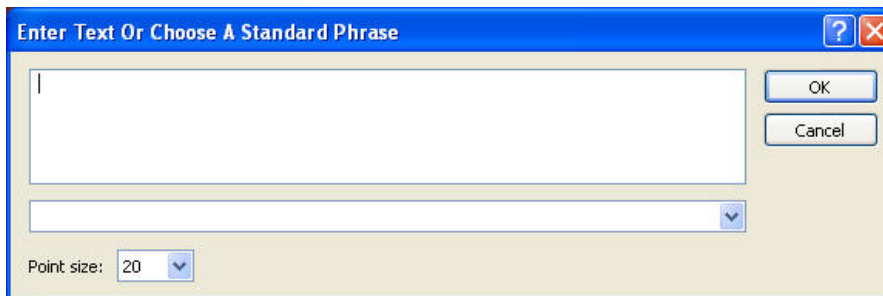


#### 2. Position your Cursor

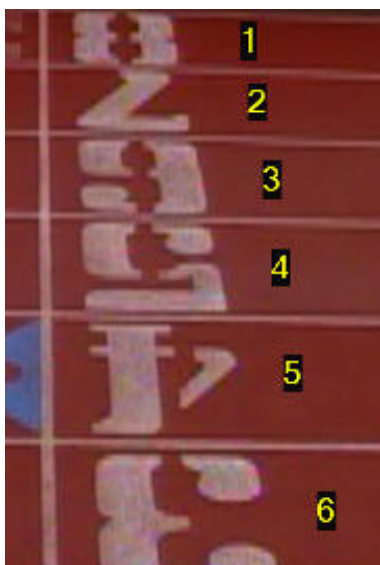
on the screen near the area would like to re-mark. LEFT CLICK again.

#### 3. Type in the Lane Number

inside the box that appears. Select OK.



#### 4. Drag to the desired location



**LEFT CLICK** the number and **HOLD**. Drag to the exact location you wish to edit on the video screen.

**Tip:** If necessary, **RIGHT CLICK** your mouse on the number to change attributes (color, size, width).

