

General Instructions



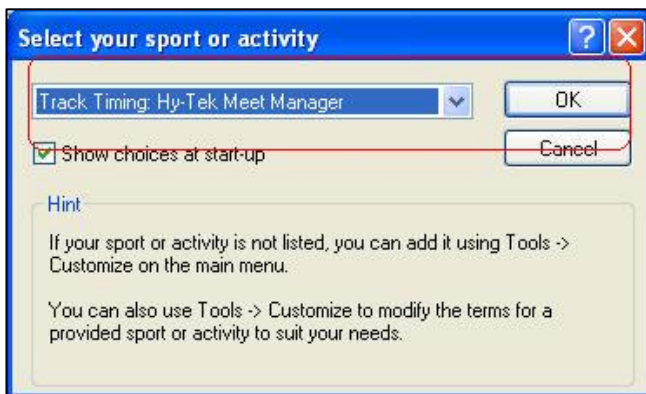
Setting up a Track Meet in Eagle Eye

The following assumes you have installed Eagle Eye software on your computer.

1. **Open Eagle Eye** by double clicking the **Eagle Eye icon** on your desktop
2. **SELECT** the appropriate **SPORT OR ACTIVITY**

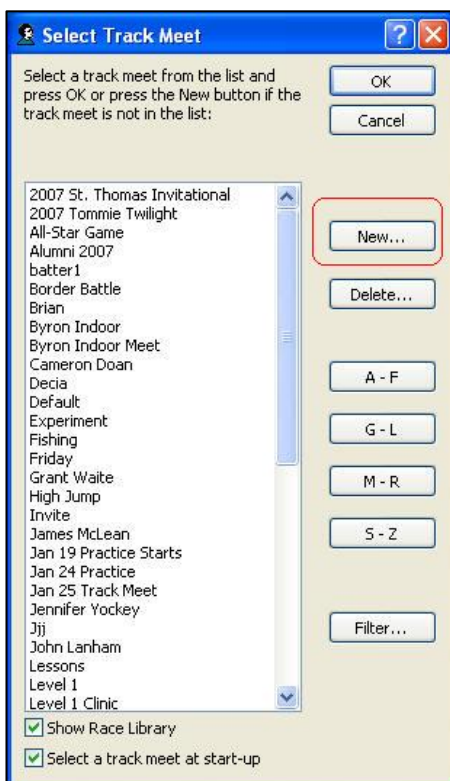
Select the appropriate **TIMING METHOD** from the drop down list (SEE BELOW)

- a. Select: TRACK TIMING: PYRO-BRIGHT FLASH (if hand writing the results or re-typing them)
- b. Select: TRACK TIMING: HY-TEK MEET MANAGER (if you integrating results with Hy-Tek)



Tip: Both selections a. and b. above, will be using the Pyro-Flash, however it is critical that if you will be integrating Eagle Eye with Hy-Tek that you select **TRACK TIMING: HY-TEK MEET MANAGER** from the list

- 3.



Create a New Track Meet

Select **NEW** from the **SELECT TRACK MEET** box.

Note: Your Directory will not so as many files as depicted below.

Select OK

4..

New Track Meet: Fill out track meet info and press OK

Track Meet General Capture

Name: My New Track Meet

Email:

Gender: Male

Days: 1

Meet Class:

Lefty

Alias:

The alias is used in place of Name for external programs like email and the Notebook.

OK Cancel

Name your Track Meet

Type the name of your new track meet.

No additional information is necessary in this window.

Select OK.

5.

Select Track Meet

Select a track meet from the list and press OK or press the New button if the track meet is not in the list:

OK Cancel

New...

Delete...

A - F

G - L

M - R

S - Z

Filter...

Jji
John Lanham
Lessons
Level 1
Level 1 Clinic
Miac
MIAC Conference Championships D
My Directory
My New Track Meet
My Race Directory
New Meet
Pre Season
Scope Testing 22307
Sean Kline
Set Up
Ski Challenge Race Video
Ski Challenge Races
Snowshoe
St. Thomas Weight Room
Sunday AM
SundayPM
Test4.16.07
Test4.18.07
TESTing
The Qualifier
Tim Hanson
Ty's Stuff

Show Race Library
 Select a track meet at start-up

Select your new track meet from the list.

Select OK.

6.

Where do you want to start?

Show these choices at start-up

Capture Races Transfer video from your DV camcorder to the computer for analysis

Analyze Races Heat Number and compare races that are already stored in the computer

View Live Video Display video on the computer without recording it to the computer

Import Races Import races from a camera, memory card, CD or disk to the computer for analysis

Select **LIVE VIDEO** from the WHERE DO YOU WANT TO START

option box...third option in the picture below. VIEW LIVE VIDEO helps confirm that we have a live picture - everything is working and reading to go. You can go straight to CAPTURE RACES if you wish -- you will also see a live video in the preview window.

Tip: If this option is not given - go to TOOLS-OPTIONS on the top toolbar and open the GENERAL tab and place a check in the third box - show Capture/Live Choices/Capture] **Tip:** You will only be able proceed past this point if you have your digital camera and the Pyro Bright Flash device connected properly through the Converter.