

Software Installation



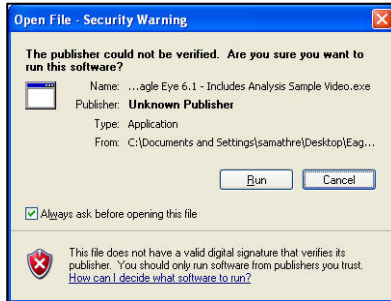
Software Installation

Installing your Eagle Eye software is a two step process consisting of installation and activation. The installation process described below will guide you through the process of loading Eagle Eye onto your computer.

Open the CD

Place your Eagle Eye software CD into the CD drive of your computer and follow the prompts. If you are not prompted, locate the CD on your C drive and Select Open. The Installation Wizard will guide you through the following process.

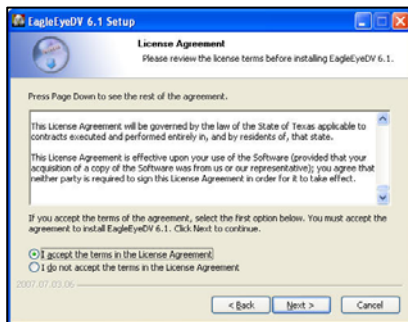
1. To begin the Install **Select Run**



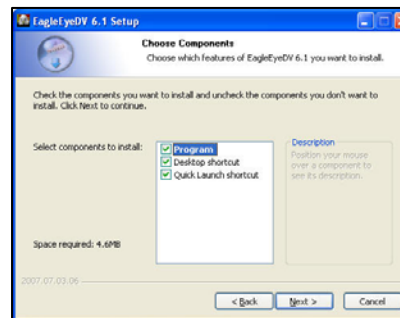
2. **Select Next** to the Setup Wizard.



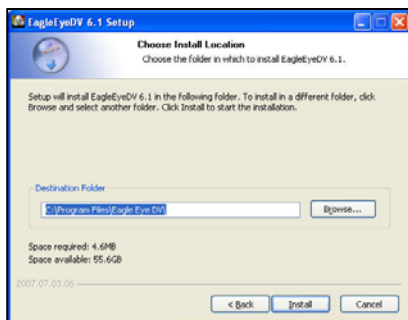
3. Read and accept the License Agreement **Select Next**



4. Leave all 3 of the components checked. **Select Next**



5. The **Install Location** is defaulted to your desktop. **Select Install**



6. Finish the Install process by The **Selecting Finish**

