

## software Features

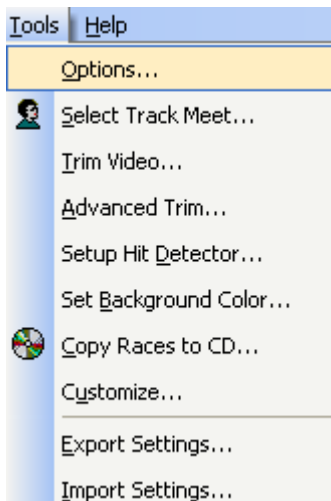
Eagle Eye

### How can I change where my video is stored

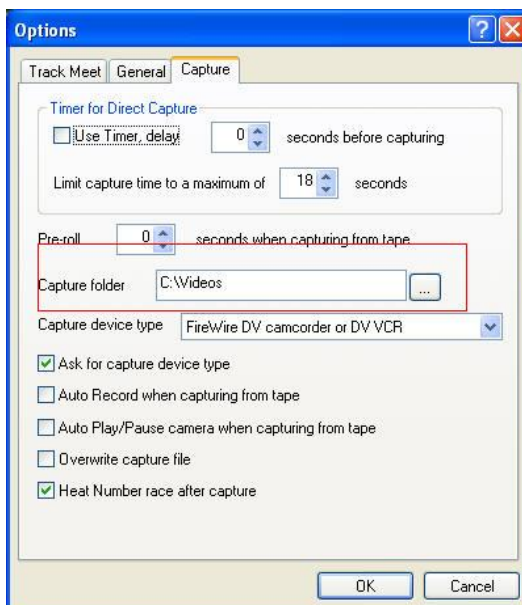
Eagle Eye software automatically creates and stores its video files in a folder on your C drive called Videos. The steps below will instruct you how to change this location in the event you wish to save your video to an external drive, etc.

**Note:** Always remember to erase or transfer previous race video from this folder prior to a new track meet. Keeping adequate space on your hard drive is important to the proper functioning of Eagle Eye software.

1. **Open the CAPTURE FOLDER** Go to **TOOLS-OPTIONS** on the top toolbar.



2. **Change CAPTURE FOLDER**



Click open the **CAPTURE** tab and open the **CAPTURE FOLDER** (middle of page) and browse to the folder or drive you wish to store you video files.