

Eagle Eye & Hy-Tek Troubleshooting



How can I test my older Pyro-Bright Flash?

If you plan to import Eagle Eye race times into Hy-Tek Meet Manager, your Pyro-Bright Flash timer must display the time code on the left side of the screen and must do so in the correct location for Eagle Eye to internally read the race times.

If the overlay position is off, you will not be able to import race time into Hy-Tek. **Note:** Pyro-Bright Flash units manufactured prior to 2007 may need to be re-configured.

1. Test your Pyro-Bright Flash Timer

Set up your timing system as described in the **GENERAL INSTRUCTIONS: Basic Set-up** tutorial.

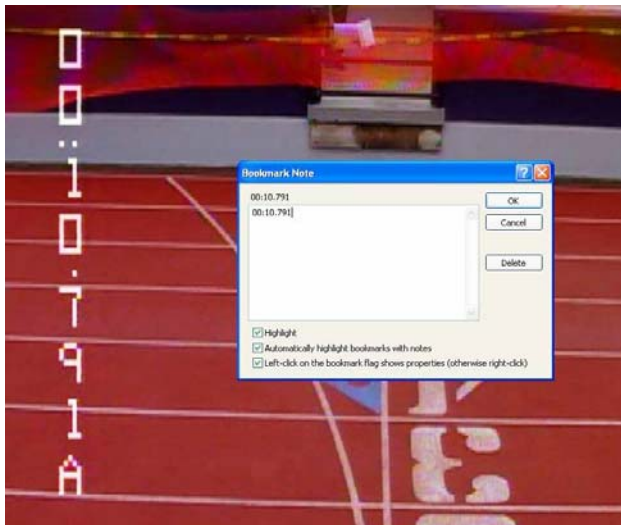
2. Trigger your Pyro-Flash unit

Trigger your Pyro-Flash unit by flicking the scope at a ceiling light, computer screen or set it off with the flash of a digital camera.

3 Record a segment of video

With time code now running on your computer screen record a small segment of video.

4.



Create a bookmark (time)

Create a simulated race time by **LEFT CLICKING** the **BOOKMARK** feature (small blue flag at the bottom of the screen) and compare the time code on the screen to the time that appears in the pop up Bookmark. In the example below both show a time of :10.791.

These two times must be consistently identical in order for Eagle Eye software to successfully integrate with Hy-Tek Meet Manager.

How do reconfigure my Pyro-Bright Flash unit?

1. Send it back to the manufacturer

If your older Pyro Flash unit does not display the time code in the correct location you must send it back to the manufacturer to be reconfigured.

2. Shipping

There is no charge for this service. We only ask that you include \$10.00 to cover the cost of return shipping. Please call the manufacturer directly for shipping instructions: 701-326-4170 (May-Nov.) 850-576-0573 (Dec.-April).