

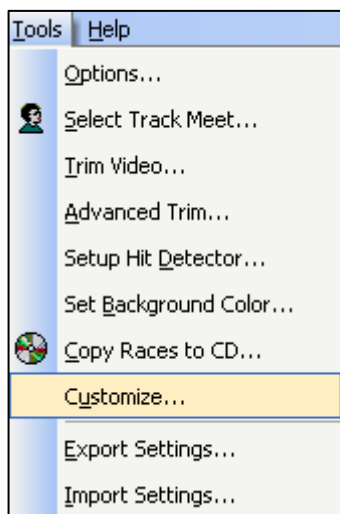
## Basic Troubleshooting

*Eagle Eye*

**Software:** Most software problems occur when the internal software settings or options are unknowingly changed by the user. When this happens, the software may function differently from what the user expects.

### Why am I no longer asked to select sport or activity when opening the software?

1. Go to **TOOLS-CUSTOMIZE** on the top toolbar.



2. **Place a check** in the box in the lower left - titled SELECT YOUR SPORT OR ACTIVITY AT START-UP.

